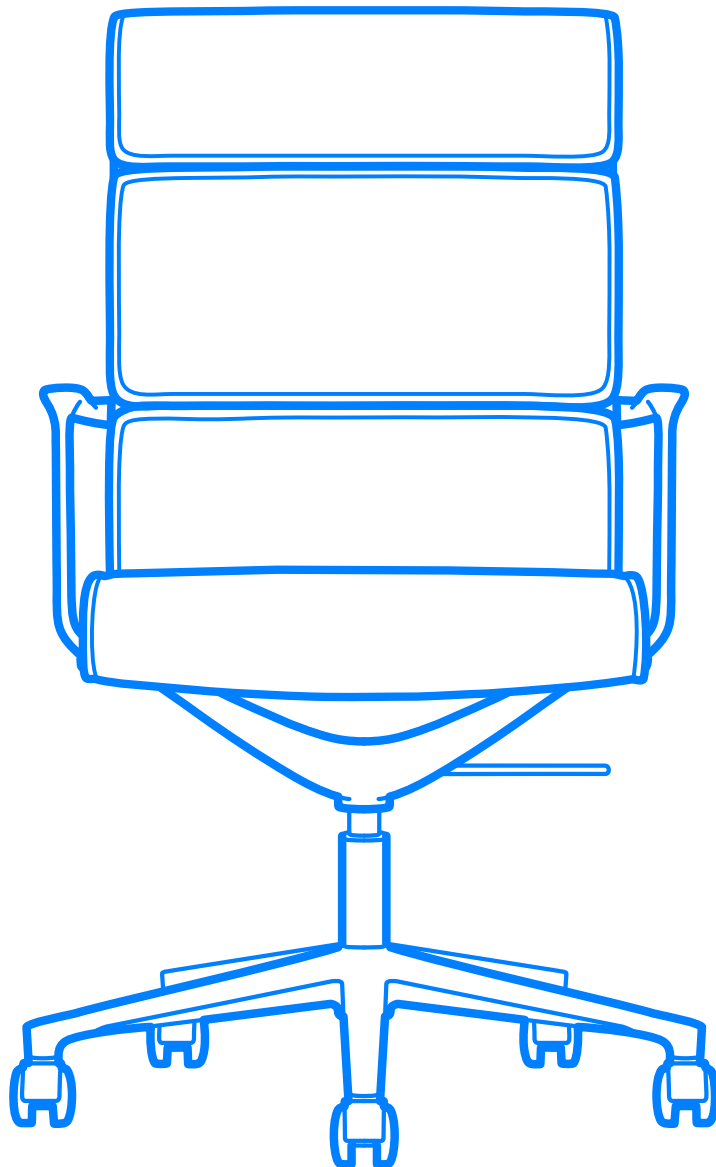


UNA CHAIR EXECUTIVE

4/5 star base

⋮



ICF

Design story



The Una Chair collection of office chairs is completed with Una Executive, a padded high-profile chair which adds new options to an already highly successful solution. Una Executive joins functionality to design in the definition of an object which is at the same time elegant and modern, simple and efficient. Una Executive is a chair collection designed to support executive and meeting business in a dynamic and flexible way offering a wide choice of personalization.

Great attention has been paid to every detail, starting from the upholstered pads to the characteristic perimetral seams, from the die-cast aluminum frame to the mechanical devices that improve comfort when seated even for a significant number of hours. The collection is designed for executive office, meeting rooms or boardroom and is available in a low back and a high back version, optionally with a swivel auto return mechanism and a forward tilting mechanism. The upholstery is available in leather or fabric. Height adjustment with pneumatic gas lift. Four-star base on glides or five-star base on castors, made of die-cast aluminum.

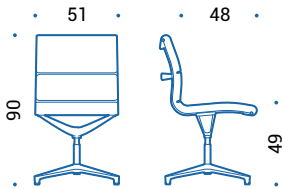
Specifications



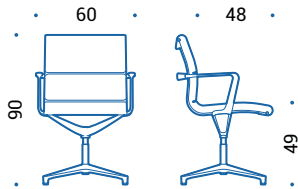
- 1 **Structure:** Die-cast aluminum side elements and crosspieces elements fastened together. The resulting frame is a rigid structure able to maintain its shape even under conditions of considerable stress and also functions as a specific support for the padding. Available with low or high back and in three different finishes: polished, chromed or painted.
- 2 **Seat and backrest:** The special padding, made of a series of cushions combined with a load-bearing sheet stretched between the two side elements, guarantees maximum comfort and durability. The shaped cushions with differentiated densities are made of polyurethane foam and upholstered in fabric or leather. The leather covering includes an eco-leather back with predetermined color combinations.
- 3 **Armrests:** Closed shape, made of die-cast aluminum with finish depending on the structure. Optional leather armrest covers. Available also without armrests.
- 4 **Swivel auto-return mechanism:** This special mechanism, not adjustable in height, allows the swivel chair to freely rotate and automatically returns it to its original position to keep the position of the meeting chairs always aligned. It is standard on the 4-star base models.

- 5 **Height adjustment:** Seat height can be adjusted a maximum of 12 cm with a lever. The gaslift complies to EN16955:2017.
- 6 **Tilt mechanism:** An intuitive and effective tilt mechanism that instantly follows the user's movements. The particularly forward rotation point reduces pressure on the lower limbs while the chair rocks. The movement of the seat allows up to 13 ° of oscillation. The side knob allows to adapt the resistance of the tilting mechanism to the weight and sitting style of the user. Lever controls integrate the seat height adjustment, allow to lock/unlock the tilting mechanism in 4 positions and activate the backrest safety release.
- 7 **Base:** Four or five star base made of die-cast aluminum, with a polished, chromed or painted finish depending on the structure. Available with castors or plastic glides.
- 8 **Castors:** In black plastic with soft running surface for use on any type of flooring and a load depending safety brake complies to EN 12529:2001. Castor cover in chromed Zamak or black plastic, depending on the base finish, diam. 50 mm.
- 9 **Glides:** In black nylon base and soft-plastic glide, diam. 37 mm.

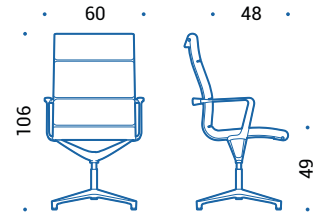
Dimensions



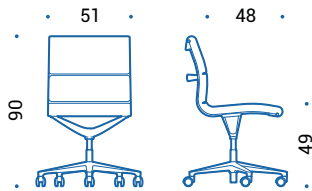
UNA.905 | swivel chair, fixed height, swivel auto-return mechanism



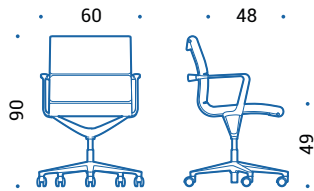
UNA.908 | swivel chair, fixed height, swivel auto-return mechanism



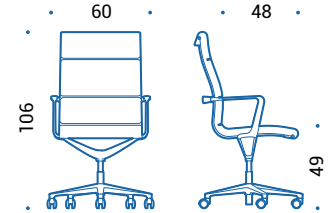
UNA.915 | swivel chair, fixed height, swivel auto-return mechanism



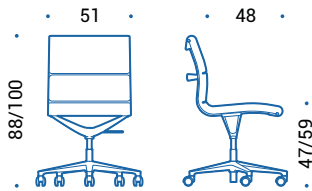
UNA.905GR | swivel chair, fixed height



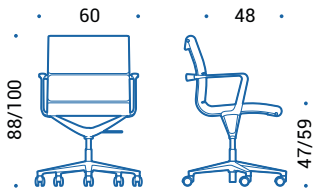
UNA.908GR | swivel chair, fixed height



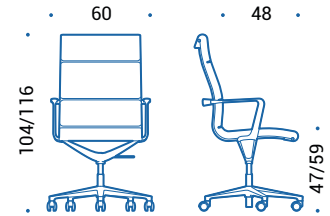
UNA.915GR | swivel chair, fixed height



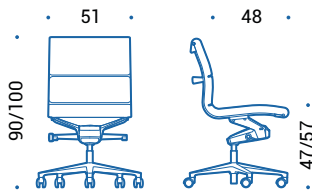
UNA.906 | swivel chair, height adjustable



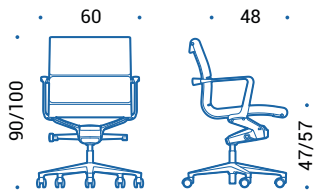
UNA.909 | swivel chair, height adjustable



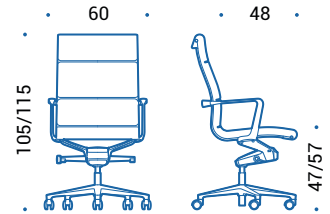
UNA.918 | swivel chair, height adjustable



UNA.916T | swivel chair, height adjustable, tilting mechanism



UNA.917T | swivel chair, height adjustable, tilting mechanism



UNA.919T | swivel chair, height adjustable, tilting mechanism

Colours and finishes

Structure, base and armrests

Aluminium



47 | Polished

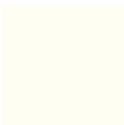


55 | Chromed

Painted aluminium



115 | Black



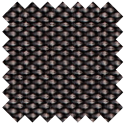
100 | White



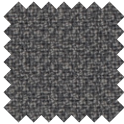
120 | Bronze

Upholstery

Fabric



Cat. F | Breeze Fusion
(7 colours)



Cat. F | Fame Hybrid
(4 colours)

Leather



Cat. E | Leather
(18 colours)



Cat. H | Premium Leather
(12 colours)

—
icf-office.it
■

ICF