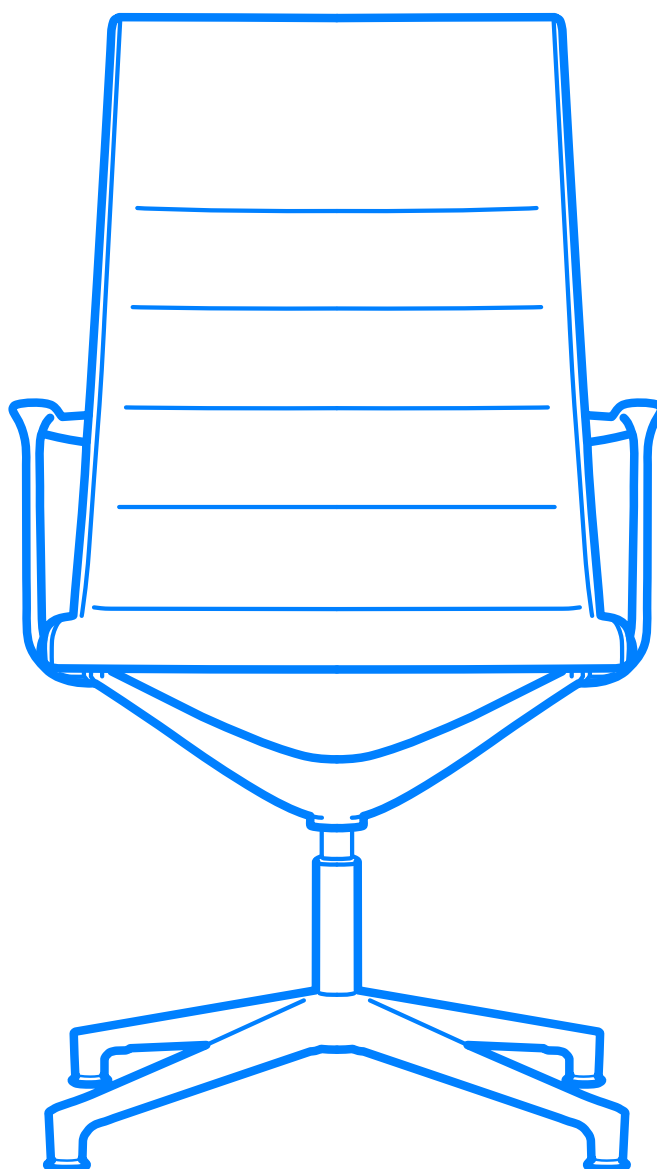


VALEA ELLE

4/5 star base

⋮



ICF

Design story



Aesthetically comfortable: these two words brilliantly sum up the concept behind Valea, an office chair combining classical aesthetics with unique comfort. Valea has a sinuous and essential frame underpinning a seat that is an invitation to relax: it is completely padded and upholstered in fabric or leather, to “envelop” the user in complete comfort. The collection is completed with the “Esse”, “Lounge”, “Soft” and “Cantilever” models.

Seating collection available with three back heights. Internal structure with side tubes and crosspieces steel elements fixed together. Pad in polyurethane foam upholstered in fabric or leather. Sight metal elements in die-cast aluminum available in three finishes: polished, chromed or painted. Height adjustment with pneumatic gas lift. Optional tilting mechanism. Four star base on glides or five star base on castors.

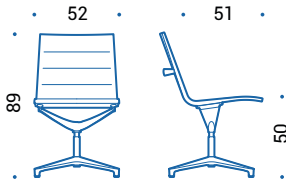
Specifications



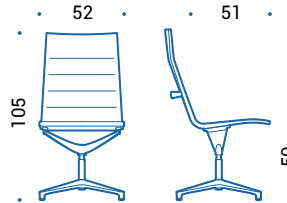
- 1 **Structure:** The tubular steel frame is a rigid structure able to maintain its shape even under conditions of considerable stress. Elastic bands stretched across the structure to support and distribute the weight of the body. Cold-foamed polyurethane with variable thickness. Visible load-bearing elements made of die-cast aluminum with polished, chromed or painted finish. Available in three backrest heights.
- 2 **Seat and backrest:** The leather or fabric upholstery is printed on a layer of flexible polyurethane in order to obtain a series of typical horizontal stripes. The double profile seams on the sides and on the back of the structure draw and characterize the profile of the seat.
- 3 **Armrests:** Closed shape, made of die-cast aluminum with finish depending on the structure. Optional leather armrest covers. Available also without armrests.
- 4 **Swivel auto-return mechanism:** This special mechanism, not adjustable in height, allows the swivel chair to freely rotate and automatically returns it to its original position to keep the position of the meeting chairs always aligned. It is standard on the 4-star base models.
- 5 **Height adjustment:** Seat height can be adjusted a maximum of 12 cm with a lever. The gaslift complies to EN16955:2017.

- 6 **Tilt mechanism:** An intuitive and effective tilt mechanism that instantly follows the user's movements. The particularly forward rotation point reduces pressure on the lower limbs while the chair rocks. The movement of the seat allows up to 13 ° of oscillation. The side knob allows to adapt the resistance of the tilting mechanism to the weight and sitting style of the user. Lever controls integrate the seat height adjustment, allow to lock/unlock the tilting mechanism in 4 positions and activate the backrest safety release.
- 7 **Base:** Four or five star base made of die-cast aluminum, with a polished, chromed or painted finish depending on the structure. Available with castors or plastic glides.
- 8 **Castors:** In black plastic with soft running surface for use on any type of flooring and a load depending safety brake complies to EN 12529:2001. Castor cover in chromed Zamak or black plastic, depending on the base finish, diam. 50 mm.
- 9 **Glides:** In black nylon base and soft-plastic glide, diam. 37 mm.

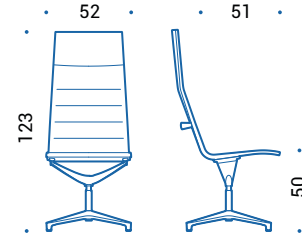
Dimensions



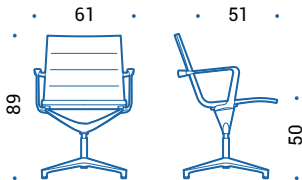
VAL.405 | swivel chair, fixed height, swivel auto-return mechanism



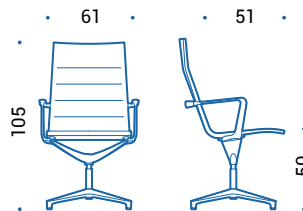
VAL.605 | swivel chair, fixed height, swivel auto-return mechanism



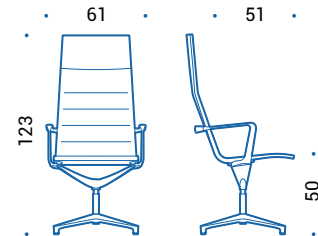
VAL.805 | swivel chair, fixed height, swivel auto-return mechanism



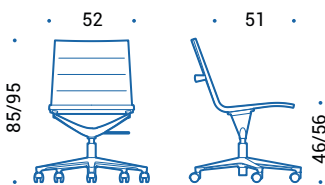
VAL.408 | swivel chair, fixed height, swivel auto-return mechanism



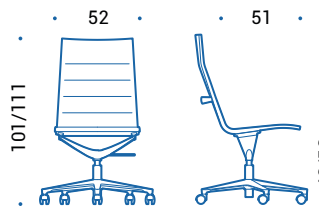
VAL.608 | swivel chair, fixed height, swivel auto-return mechanism



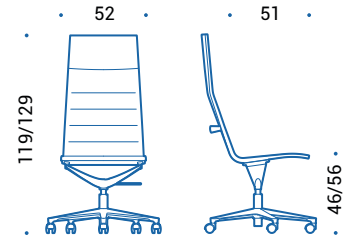
VAL.808 | swivel chair, fixed height, swivel auto-return mechanism



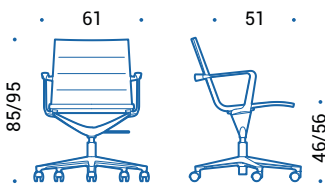
VAL.418 | swivel chair, height adjustable



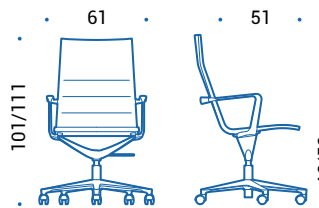
VAL.618 | swivel chair, height adjustable



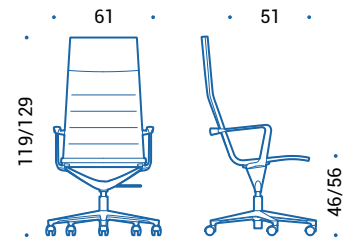
VAL.818 | swivel chair, height adjustable



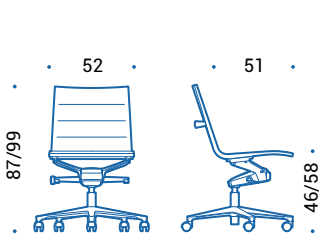
VAL.409 | swivel chair, height adjustable



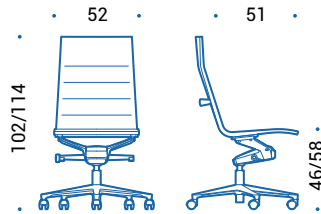
VAL.609 | swivel chair, height adjustable



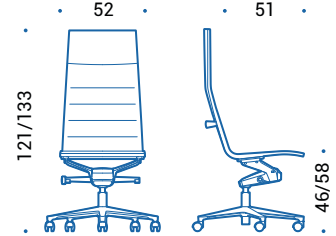
VAL.809 | swivel chair, height adjustable



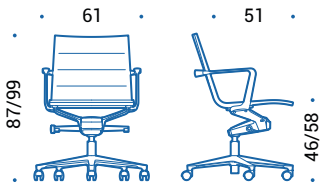
VAL.419 | swivel chair, height adjustable, tilting mechanism with enhanced forward rotation



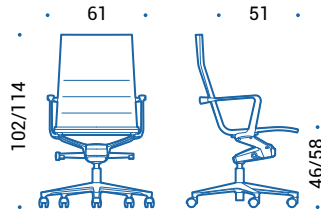
VAL.619 | swivel chair, height adjustable, tilting mechanism with enhanced forward rotation



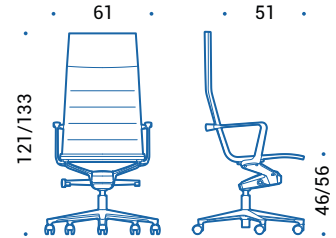
VAL.819 | swivel chair, height adjustable, tilting mechanism with enhanced forward rotation



VAL.417 | swivel chair, height adjustable, tilting mechanism with enhanced forward rotation



VAL.617 | swivel chair, height adjustable, tilting mechanism with enhanced forward rotation



VAL.9817 | swivel chair, height adjustable, tilting mechanism with enhanced forward rotation

Colours and finishes

Structure, armrests and base

Aluminium



47 | Polished

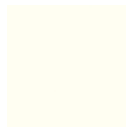


55 | Chromed

Painted aluminium



115 | Black



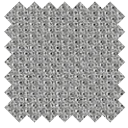
100 | White



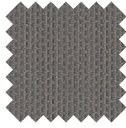
120 | Bronze

Upholstery

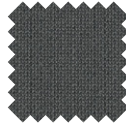
Fabric



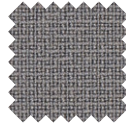
Cat. B | Atlantic
(14 colours)



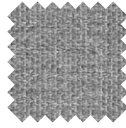
Cat. B | Mini
(7 colours)



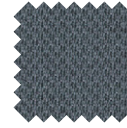
Cat. C | Cura
(8 colours)



Cat. C | Fame
(7 colours)



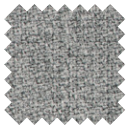
Cat. C | Mini Melange
(9 colours)



Cat. C | Sealife
(11 colours)



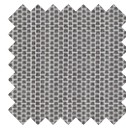
Cat. C | Step
(8 colours)



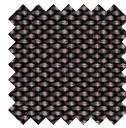
Cat. C | Step Melange
(8 colours)



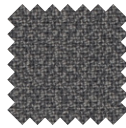
Cat. C | Sotega
(10 colours)



Cat. C | Swing
(13 colours)



Cat. F | Breeze Fusion
(7 colours)



Cat. F | Fame Hybrid
(4 colours)

Leather



Cat. E | Leather
(18 colours)

—
icf-office.it
■

ICF